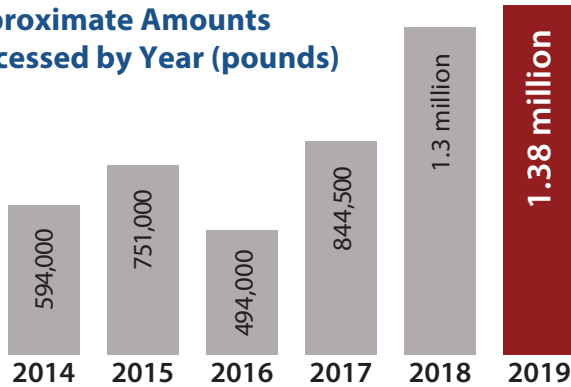


Washtenaw County Public Works Solid Waste Annual Report 2019

Approximate Amounts
Processed by Year (pounds)



Overview

The Washtenaw County Public Works Division processed 1.38 million pounds in 2019, the most in our history!

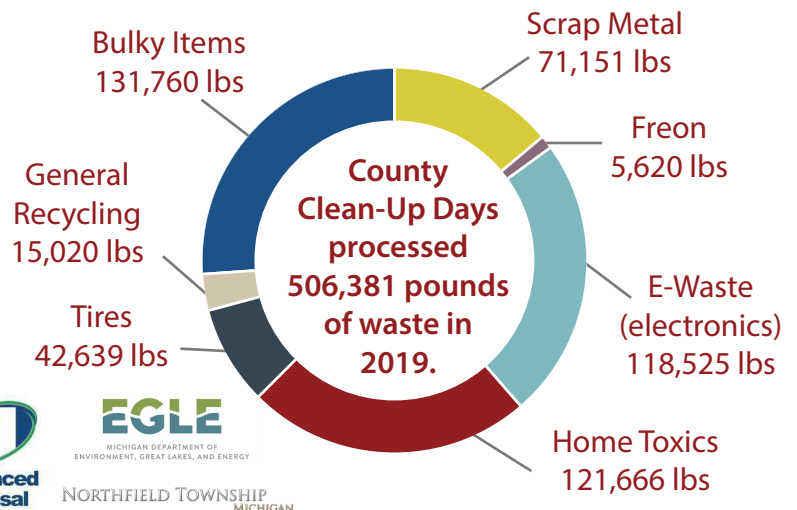
Additionally, the division achieved:

- **95,475 website views**
- **Over 60,000 residents served**
- **2 new schools in our recycling program**

County Clean-Up Days

County Clean-Up Days provide opportunities to dispose of a wide variety of items in a safe and responsible manner. In 2019, we held 5 Clean-Up Days and served 2,400 residents.

Thanks to our Clean-Up Day Sponsors:



Latex Paint (169,159 lbs)

Oil Paint & Flammables (70,575 lbs)

Pesticides (20,159 lbs)

Aerosols (15,132 lbs)

Acids & Bases (7,855 lbs)

Other (83,109 lbs)

Home Toxics Center

Since 1995, the Washtenaw County Home Toxics Center has provided a drop-off service for residents to safely dispose of hazardous materials. The Home Toxics Center is open weekdays 9 - 4:30 and select Saturdays. Visit washtenaw.org/hometoxics or call (734) 222-3950 for more information.

In 2019, more than 5,000 residents brought us nearly 367,000 pounds of material. Our weekday drop-offs also increased by 69%!



4.75/5 star customer service rating from surveys!

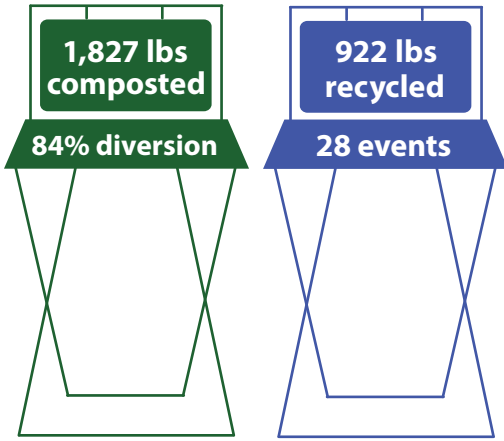
705 N. Zeeb Road
Ann Arbor, MI 48103
(734) 222-6860



8:30 a.m. - 5:00 p.m.
Monday - Friday
washtenaw.org/recycle

Zero Waste Washtenaw

Zero Waste Washtenaw increases diversion rates by providing recycling and compost services to community events. A diversion rate is the percentage of waste (by weight) recycled or composted. In 2019, we partnered with 28 events and our average diversion rate rose from 66% (2018) to 84%, with **9 events higher than 90%**!



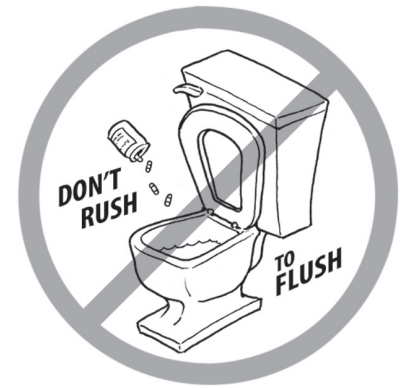
Over 31,000 Zero Waste Event Attendees Reached

Drug Takeback Program

The Drug Takeback Program partners with local universities and pharmacies to provide a convenient and safe disposal expired, excess, or unneeded medications.

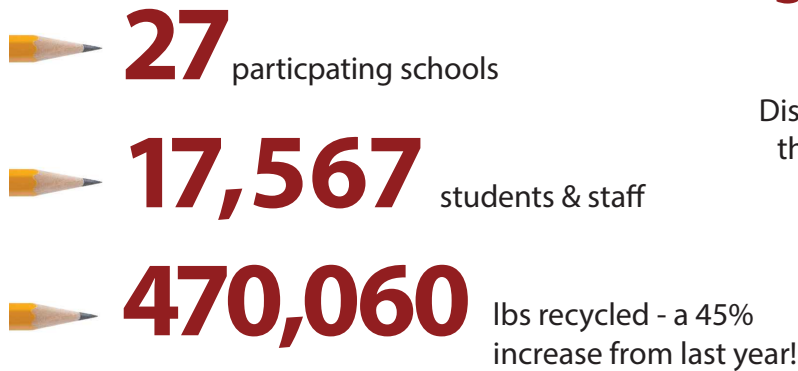
In 2019, we funded the proper disposal for **1,390 pounds** of medication.

Visit dontflushdrugs.com for more information and to find disposal sites near you.



School Recycling Program

We partner with Recycle Ann Arbor, Advanced Disposal, and the Ecology Center to provide schools throughout the county with the infrastructure and education necessary to create and maintain successful recycling programs.



Washtenaw County Public Works grew a lot in 2019. Last year brought three full-time staff, two hard-working and inspiring interns, and the most Home Toxics Center weekday drop-offs we've ever seen (a stunning 69% increase from 2018)!

We look forward to continuing to reduce waste generation, increase waste diversion, and promote accessible hazardous material disposal for all our residents.

Right: Public Works staff at the last Saturday event of 2019.

