

For Immediate Release

Contact: Kayla Steinberg, Communications Coordinator
 Washtenaw County Health Department
steinbergk@washtenaw.org
 734-544-6848

What does health look like in Washtenaw County? New Health for All Washtenaw website provides community health data, stories, and action

Visit www.healthforallwashtenaw.org to explore and learn about the new Health for All Steering Committee

YPSILANTI, Mich., Nov. 18, 2019 – The Washtenaw County Health Department has launched a new website that holds interactive data on hundreds of factors related to community health. www.healthforallwashtenaw.org is a central location for information, stories, and action items on what impacts our health – think of it as an online health record for all of Washtenaw County.

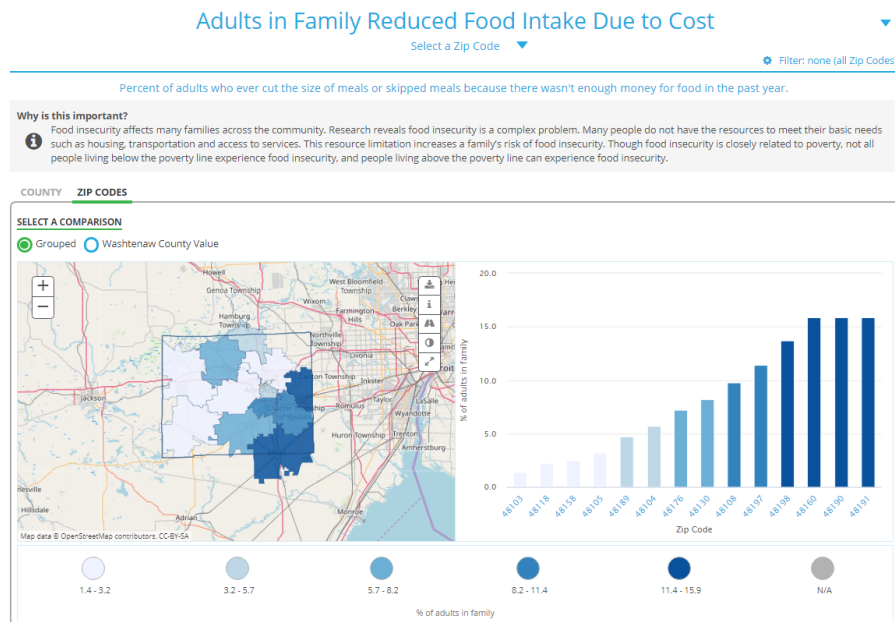
“We’re so excited to provide this resource for members of our community,” says Lily Guzmán, Performance Improvement Manager at the Washtenaw County Health Department. “We want people to keep coming back to the website. It can be used in so many ways – to back up what health looks like in your neighborhood, to provide data for funding opportunities for community projects, or to see our successes and areas for improvement as a county.”

On the new website, you can find data at the county, city, zip code, or even census tract level related to health, economics, education, environment, transportation and more. The data are displayed in interactive dashboards, charts, graphs, and maps. Data are compared to previous years, as well as to state and national averages. You can easily create your own dashboard or report on the data that interests you.

Health for All Washtenaw also provides stories to put faces to the numbers behind the data. Plus, there is a resource directory of promising practices, funding opportunities, and local resources to help users take action to improve the data they find.

Learn how to use the website in this [5-minute video tutorial](#). Trainings on the website will be offered soon.

Interactive data example: adults in family reduced food intake due to cost by zip code. [Find photos for use in articles.](#)



Washtenaw County Health Department
 555 Towner Street • Ypsilanti, MI 48197
 Phone: 734-544-6700 • Fax: 734-544-6700
washtenaw.org/health



Environmental Health Division
 705 N Zeeb Road • Ann Arbor, MI 48103
 Phone: 734-222-3800 • Fax: 734-222-3930
washtenaw.org/envhealth

Health for All Steering Committee leading community health assessment and planning

The new website is also home to information on the Health Department's recently formed Health for All Steering Committee. The steering committee was created this year to prioritize public health issues and take action to improve conditions that support health and well-being. [The committee](#) is made up of community members, local health system and hospital representatives, and other local organizational representatives.



Health for All Steering Committee. [Find photos for use in articles.](#)

“One way to challenge the status quo is to bring the people that make up our community to the table to help identify the true needs of our most vulnerable members,” says Carla Pretto-Kernahan, co-chair of the Health for All Steering Committee. “All our members were selected for the unique lived experiences and expertise we bring to the conversation, and we have put a lot of thought and care into the vision we are working towards.”

That [vision](#) is defined by the Steering Committee as, “We are a caring, inclusive, and just community that comes together to ensure that everyone has equitable access to the resources needed to thrive.”

“I'm proud to say I'm a part of the Washtenaw County Health Department Steering Committee,” says Noah Rucker, the committee's other co-chair. “I know we will make a big difference because we care to make a big difference.”

The Health for All Steering Committee and website are both integral parts to the Washtenaw County Health Department's updated [community health assessment and planning process](#).

Washtenaw County Health Department

The Washtenaw County Health Department promotes health and works to prevent disease and injury in our community. Our mission is to assure, in partnership with the community, the conditions necessary for people to live healthy lives through prevention and protection programs.

The Washtenaw County Health Department has achieved national accreditation through the Public Health Accreditation Board. Visit us at washtenaw.org/health or call 734-544-6700.

###