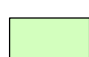

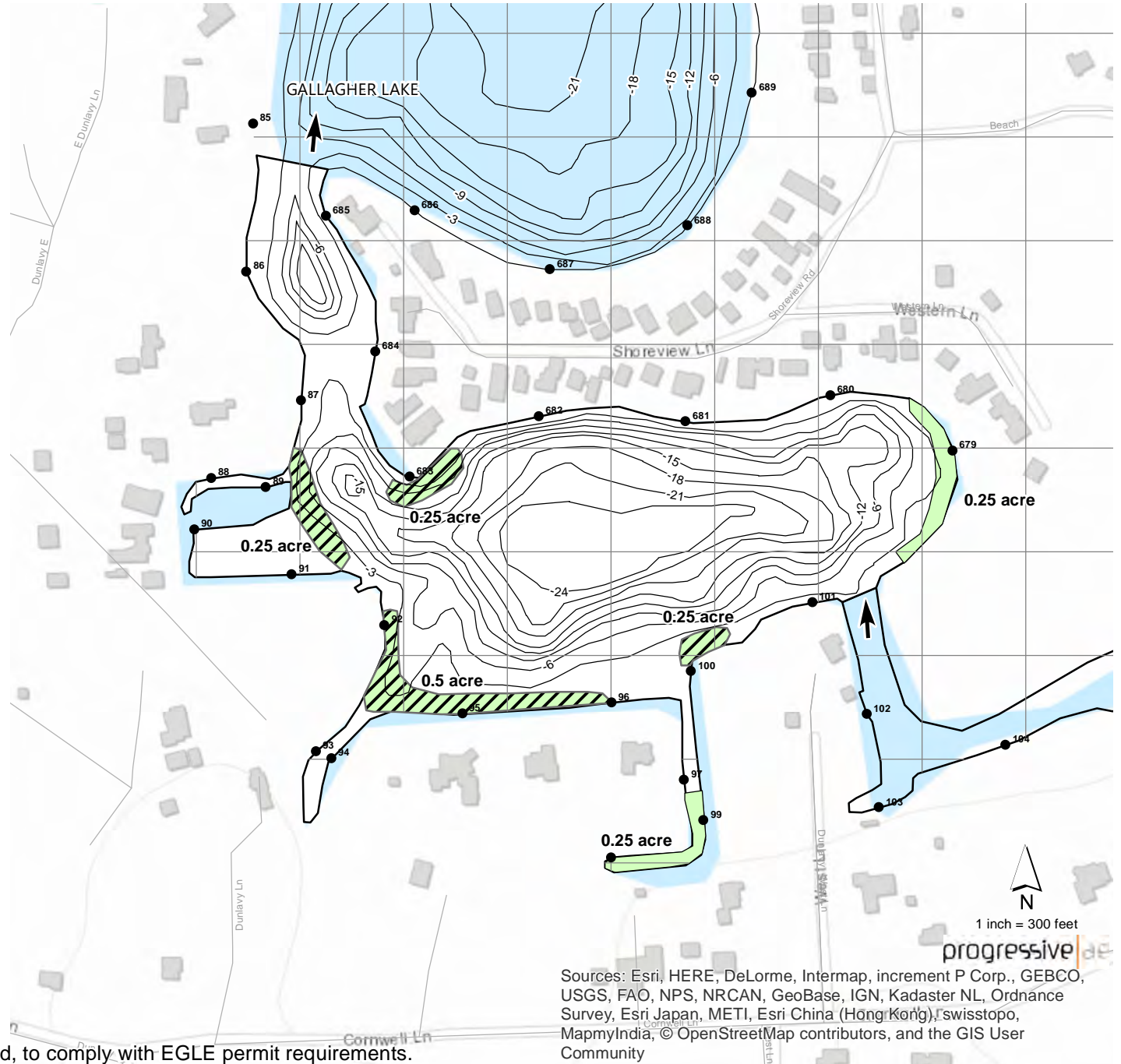


LONG (LOON) LAKE LIVINGSTON COUNTY, MICHIGAN JULY 6, 2020 TREATMENT MAP

Treatment

-  Algae = 0.5 acre of nuisance filamentous algae w/CuSO4
-  Copper/Hydro = 1.25 acres of starry stonewort w/CuSO4/Hydrothol 191



LAKE AREA = 17 ACRES
REVISION DATE: MARCH 2020

The applicator shall make adjustments, if needed, to comply with EGLE permit requirements.

Sources: Esri, HERE, DeLorme, Intermap, increment P Corp., GEBCO, USGS, FAO, NPS, NRCAN, GeoBase, IGN, Kadaster NL, Ordnance Survey, Esri Japan, METI, Esri China (Hong Kong), Swisstopo, MapmyIndia, © OpenStreetMap contributors, and the GIS User Community

progressive 