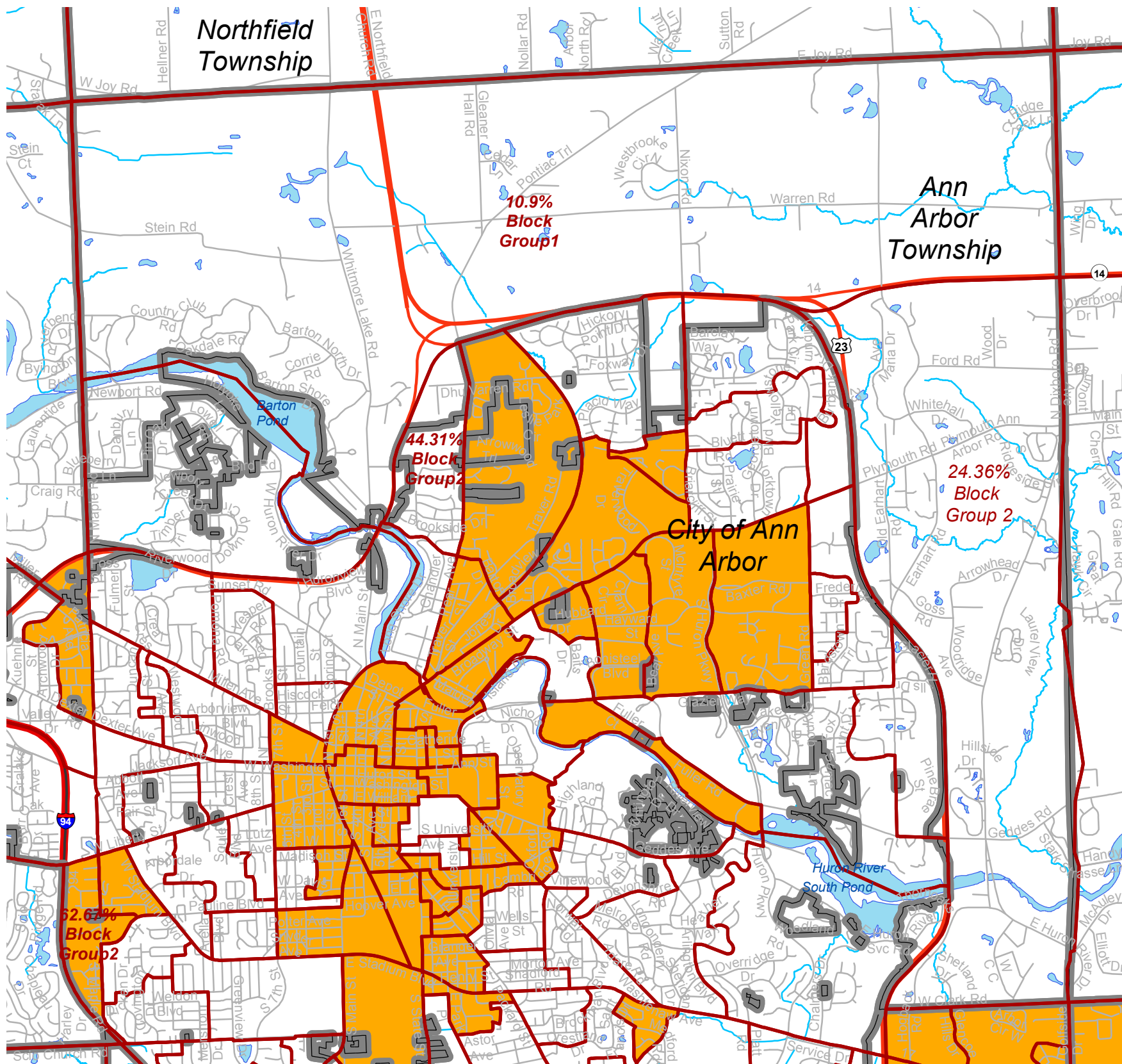


# Ann Arbor Township Percentage of Low and Moderate Income Persons by Census Block Group Based on 2011-2015 ACS

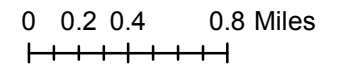


## Legend

- Block Groups
- Boundaries
- Freeways
- US Highways
- State Highways
- Local Roads
- 51 - 100% LMI
- Streams
- Water Bodies
- 24.36% Percent LMI in Block Group
- Block Group Label



The map shown here is for illustrative purposes only, and is not suitable for site-specific decision-making. The data depicted is compiled from a variety of sources, thus this information is provided with the understanding that the conclusions drawn from the data are solely the responsibility of the user, and assumptions of the legal status of this data are hereby disclaimed.  
 Last Update: 4/18/2019 Washtenaw County Office of Community and Economic Development



Source: American Community Survey (ACS) 5-Year 2011-2015 Low and moderate Income Summary Data, U.S. Census Bureau, released by U.S. Department of Housing and Urban Development