



OFFICE OF COMMUNITY &  
ECONOMIC DEVELOPMENT

*Collaborative solutions for a promising future*



# Human Services Partnership Planning Community Meetings August 2021

# Coordinated Funding 10-year History

2008:  
Integrated  
Funding –  
Public Sector

2010  
Leadership  
Team Formed;  
MOU Signed by  
5 Funding  
Partners

2011:  
2-Year Pilot  
Implemented

2012:  
Private Family  
Foundation  
(RNR) Engages

2013:  
Pilot Extended  
for 3<sup>rd</sup> Year;  
TCC Evaluation  
Completed

2014:  
Implemented  
Community-  
Wide  
Outcomes

# Coordinated Funding 10-year History

2015: TCC  
Outcomes  
Evaluation (Start):

2016  
St. Joseph Mercy  
Ann Arbor joins  
partnership

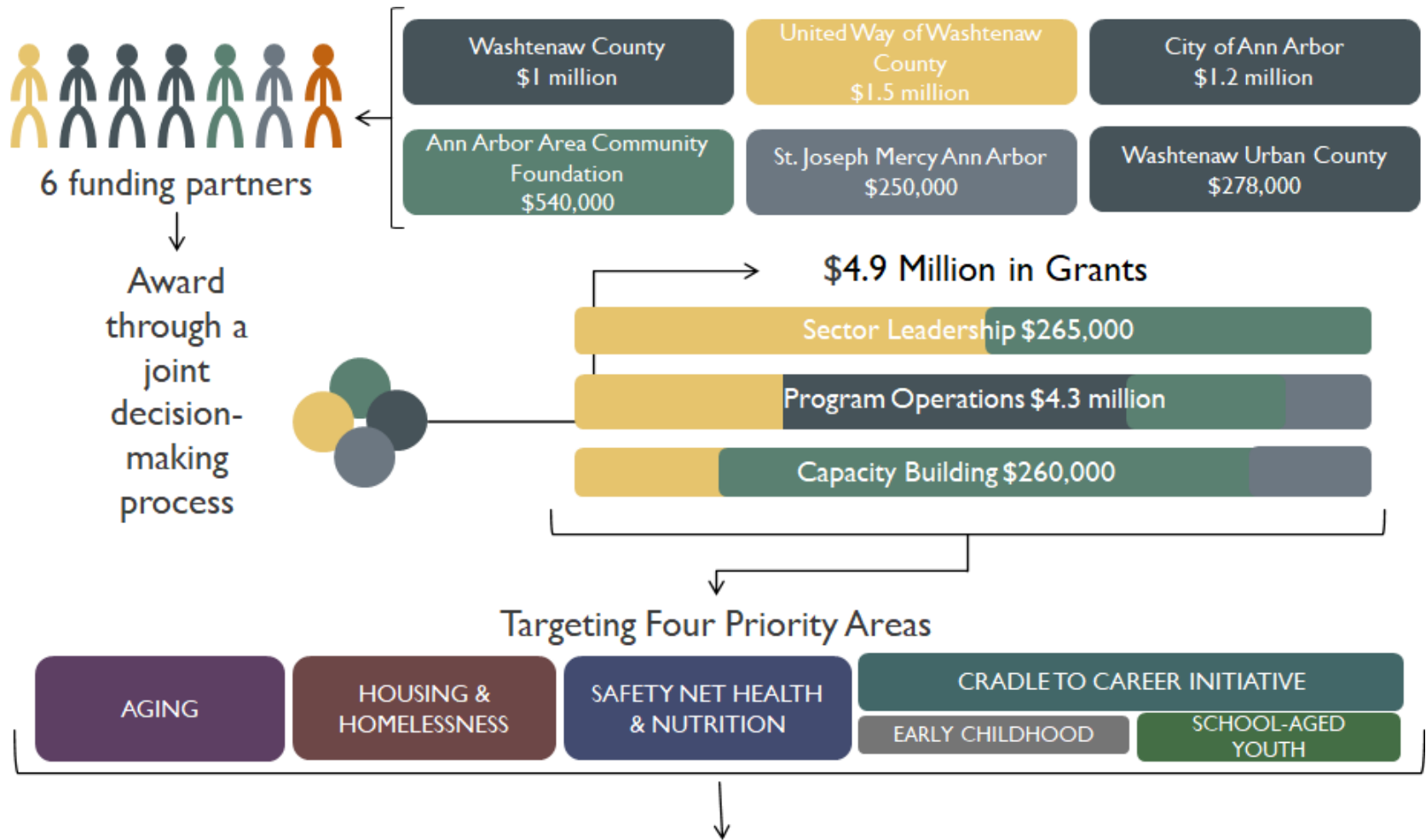
2018  
TCC outcomes  
evaluation report  
released –  
Elimination of  
Sector Leadership

2018-2019:  
Funding partners  
reviewing  
goals/outcomes –

2020:  
AAACF leaves  
partnership &  
Coordinated  
Funding ends in  
current form

2021 Transition  
grants provided as  
planning process  
continues

# Coordinated Funding Previous Model & Investments



# Coordinated Funding Previous Model & Investments

## **Aging**

- Increase independent living for older adults

## **Cradle to Career**

- Improve school readiness
- Increase high school graduation rate
- Increase youth physical & emotional safety

## **Housing & Homelessness**

- Reduce the number of people experiencing homelessness

## **Safety Net Health & Nutrition**

- Increase access to health services & resources
- Decrease food insecurity

# Coordinated Funding



Washtenaw Coordinated Funders

## Older Adults

Our Community Outcome: Increase or maintain independent living factors for vulnerable adults 60 years of age and older with low incomes.

### COMMUNITY TRENDS

- 52% of respondents to the most recent 60+ Survey reported a very good quality of life.
- There was a slight decline between 2010 and 2015 in life satisfaction for adults 65+.
- There was an increase in social support for adults aged 75+ in the same time period.
- The percentage of those 65+ who live below poverty level has steadily hovered at around 6%.
- There is a nine year disparity in life expectancy between residents in Ypsilanti Township and those in the cities of Chelsea, Saline, and parts of Ann Arbor.
- There is a 14-year disparity based on race.

### OLDER ADULTS IN WASHTENAW COUNTY

#### Mean Age of Death

	White/Caucasian	Black/African American	Difference (Years)
Ann Arbor City	78	70	8
Rittsfield Township	73	62	11
Superior Township	77	64	13
Ypsilanti Township	69	62	7
Ypsilanti City	72	67	5
Washtenaw County	80	66	14

Source: MCHES Vital Statistics 2010-2014



#### Poverty Rate



#### Life Satisfaction

Respondents "Very satisfied" with life in 2010-2015

Age Group	2010	2015
Age 65-74	99%	96%
Age 75+	100%	97%

#### Social/Emotional Support

Respondents "Strongly/usually" have someone to rely on, 10-2015

Age Group	2010	2015
Age 65-74	85%	84%
Age 75+	72%	82%

Sources: Washtenaw County 60+ Survey; Michigan Department of Health and Human Services Vital Statistics

## Community Dashboard

JULY 2018 - JUNE 2019

### PROGRAM LEVEL OUTCOMES

This section illustrates the total number of participants who reported achieving specified outcomes, and the corresponding percentage of achievement for all participants working on that outcome.

#### Senior Crisis Intervention

Participants seeking and receiving critical senior services

1031

100%

Participants who reported increased self-sufficiency as a result of services from the senior crisis intervention programming

539

64%

#### Senior Service Network Navigation

Participants who reported the program helped them get needed services

582

68%

Participants who received assistance with completing applications

513

100%

#### Senior Social Integration

Participants who reported an increase in the number of days they feel good/healthy

245

54%

Participants that reported feeling less socially isolated as a result of program activities

453

61%

### POPULATIONS SERVED ACROSS ALL PRIORITY AREAS

Below are the boundary- and priority area- spanning populations that WCF are prioritizing across the funding periods. Percentages are estimates based on data from programs electing to track the information—they do not represent totals for all WCF participants.

Priority Population	Goal	% Served
Individuals and families residing in census tracts with a low or very low opportunity score using an the Washtenaw Opportunity Index	25-50%	74%
Families with newborns enrolled in Medicaid and/or families with children enrolled in MICHild	20-35%	24%
Homebound seniors	20-35%	30%
Individuals and families experiencing chronic homelessness	15-30%	13%
Individuals and families residing in the zip codes of 48197 and 48198	70-75%	46%
Individuals and families with annual incomes at or below 200% of the Federal Poverty Level	75-85%	90%

### DEMOGRAPHIC DATA

Number of Older Adult Participants by ZIP Code (FIGURE 1)

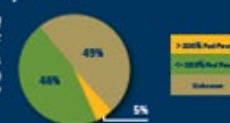
Total served: 2,867

Map reflects participants served for 180th Washtenaw County ZIP codes only.

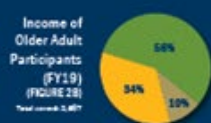


#### Breakdown by INCOME

Income of all WCF Participants (FIGURE 2A)  
Total served: 27,899

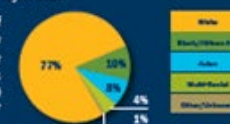


Income of Older Adult Participants (FY19) (FIGURE 2B)  
Total served: 2,867

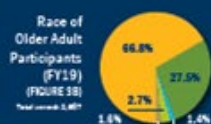


#### Breakdown by RACE

Race of Washtenaw County Residents (FIGURE 3A)  
\*Source: U.S. Census



Race of Older Adult Participants (FY19) (FIGURE 3B)  
Total served: 2,867



#### Breakdown by GENDER

Gender of Washtenaw County Residents (FIGURE 4A)



Gender of Older Adult Participants (FY19) (FIGURE 4B)  
Total served: 2,867



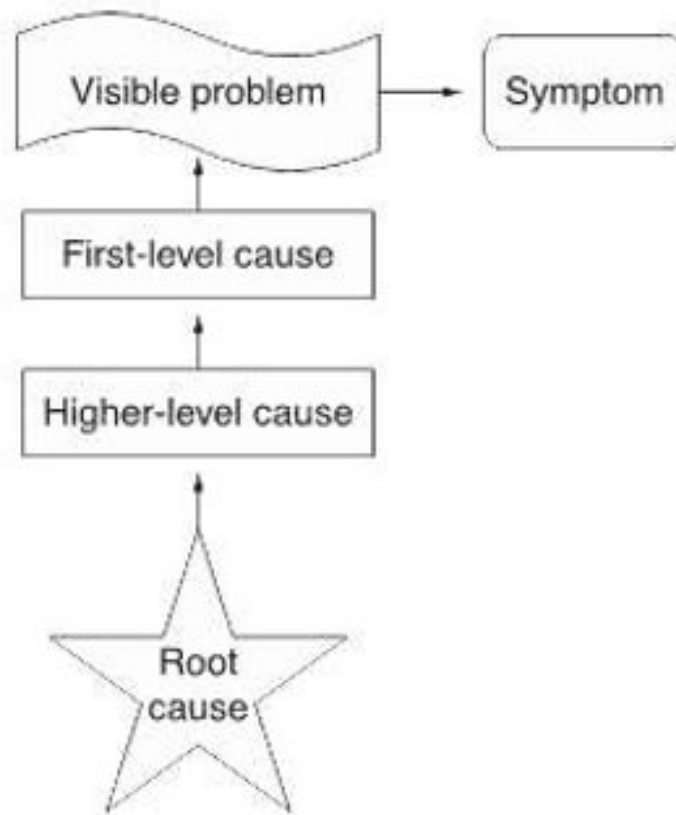
Washtenaw Coordinated Funders (WCF) is meeting the needs of our community's most vulnerable in four priority areas through three funding programs: Senior Home Services, Senior Support, and Senior Community Collaborative and Systems-Level Change. WCF includes the following partners: Ann Arbor Area Community Foundation (AAACF), Office of Community and Economic Development (OCED), representing Washtenaw County, Washtenaw County and the City of Ann Arbor, United Way of Washtenaw County (UWOC), Saint Joseph Mercy Ann Arbor (SJMAA). For more information, visit our website: [coordinatedfunders.org](http://coordinatedfunders.org).

# New Human Services Partnership Preliminary Goals

## Goals for the New Human Services Partnership

- Focus on ***Equity*** throughout the process.
- Address ***Racism, Poverty, and Trauma*** as root causes.
- Incorporate lessons learned from the ***COVID-19 response***.
- Ease the grant ***award process*** for applicants and staff.

# New Human Services Partnership Preliminary Goals



**Root Cause Analysis Diagram**



# New Human Services Partnership Scalability

DIMENSION	DESCRIPTION
<b>Scaling Out (Beneficiaries)</b>	The expansion of an innovation and/or its replication and adaptation in different contexts. As result, it has more beneficiaries.
<b>Scaling Up (Systems)</b>	Changing institutions' policies, regulations, laws, working relationships, resource flows and practices in ways that enable (rather than undermine) the performance and expansion of the innovation.
<b>Scaling Deep (Culture)</b>	Changing the “hearts and minds” of people, the organization, system or community (e.g., in terms of narrative, values, beliefs and identities) so that the idea underlying the social innovation is supported and embedded in the cultural DNA.
<b>Scaling Scree* (New Innovation)</b>	Encouraging, legitimizing and cultivating other ideas and innovations that seek the same outcomes as the original innovation, but in different ways.
<b>Scaling Infrastructure (Capacity)</b>	Improving the capacity of a system or community to scale the work through such things as capital, data, talent, knowledge, networks.

\* Scree: a mass of small loose stones that form or cover a slope on a mountain.

Sources: Riddell, Darcy & Michele-Lee Moore (2015). [Scaling Out, Scaling Up, Scaling Deep: Advancing Systemic Social Innovation and the Learning Processes to Support it](#). The J.W. McConnell Family Foundation & The Tamarack Institute for Community Engagement.

Tulloch, Gord (2018) Blog: [Expanding Conceptions of Scale Within the Social Sector](#).

# New Human Services Partnership Preliminary Funding Framework

## 3 Distinct Funding Programs

1. Human Services Mini-grants
2. Human Services Safety Net Contracts
3. High Impact Human Services Fund

All grantees for all programs will have the following expectations

- Central focus on addressing Racism, Poverty, Trauma
- Grantee organizations are working toward DEI integration in their agency
- Participation in data collection and reporting and outcome evaluation

# New Human Services Partnership Preliminary Funding Framework

## 3 Distinct Funding Programs

(All include a focus on Racism, Poverty, Trauma; DEI integration; Outcome Evaluation)

### "Human Services" Safety Net Contracts

- Programs serving those in poverty and/or just over poverty line
- Sustain the conditions: health insurance / healthcare, food security, housing, education, childcare
- Not expected to scale up programs
- Proven track record
- Non-competitive

### "Human Services" Mini-Grants

- Targeted to BIPOC and minority-led institutions with innovative, new, or improved projects
- High risk/high reward initiatives
- 1 year grant awards
- Very short RFP process
- Positive outcomes could create opportunity to apply for 5-year grant later
- Competitive

### "Human Services" 5-Year Grants

- Programs, systems, or initiatives providing new additive to current programming with high impact over time
- Positive track record in serving targeted group
- 5-year funding, with possibility of renewal with positive outcomes
- Requires strategic planning & sustainable funding
- Competitive

Questions & Answers  
with the Audience

# New Human Services Partnership Small Group Discussions

## **Small Group Breakout Sessions:**

- Click "Join the room" (random assignments).
- A designated facilitator will capture the ideas and suggestions for your group.
- Every idea is valid.
- All recorded comments are anonymous.
- A summary of key themes will be posted on the website after all Community Meetings completed.

# New Human Services Partnership Small Group Discussions

**Question 1:** How does your organization's work fit into the criterion of racism, poverty, and trauma?

**Question 2:** In what ways can you scale your work to have a more measurable and sustainable impact over time?

**Question 3:** What haven't we thought of?

# New Human Services Partnership Next Steps

## **Next Steps:**

### ***August:***

- Washtenaw County and City of Ann Arbor will be meeting with other potential funding partners.

### ***September:***

- Human Services Partners work to finalize process, funding amount and timeline.

# New Human Services Partnership Next Steps

## **Next Steps:**

### ***September/October:***

- Goal is to open funding round(s).

### ***October/November:***

- Review applications.

### ***December:***

- Obtain approvals from all funders, with intent for funding to start in January.