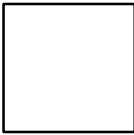
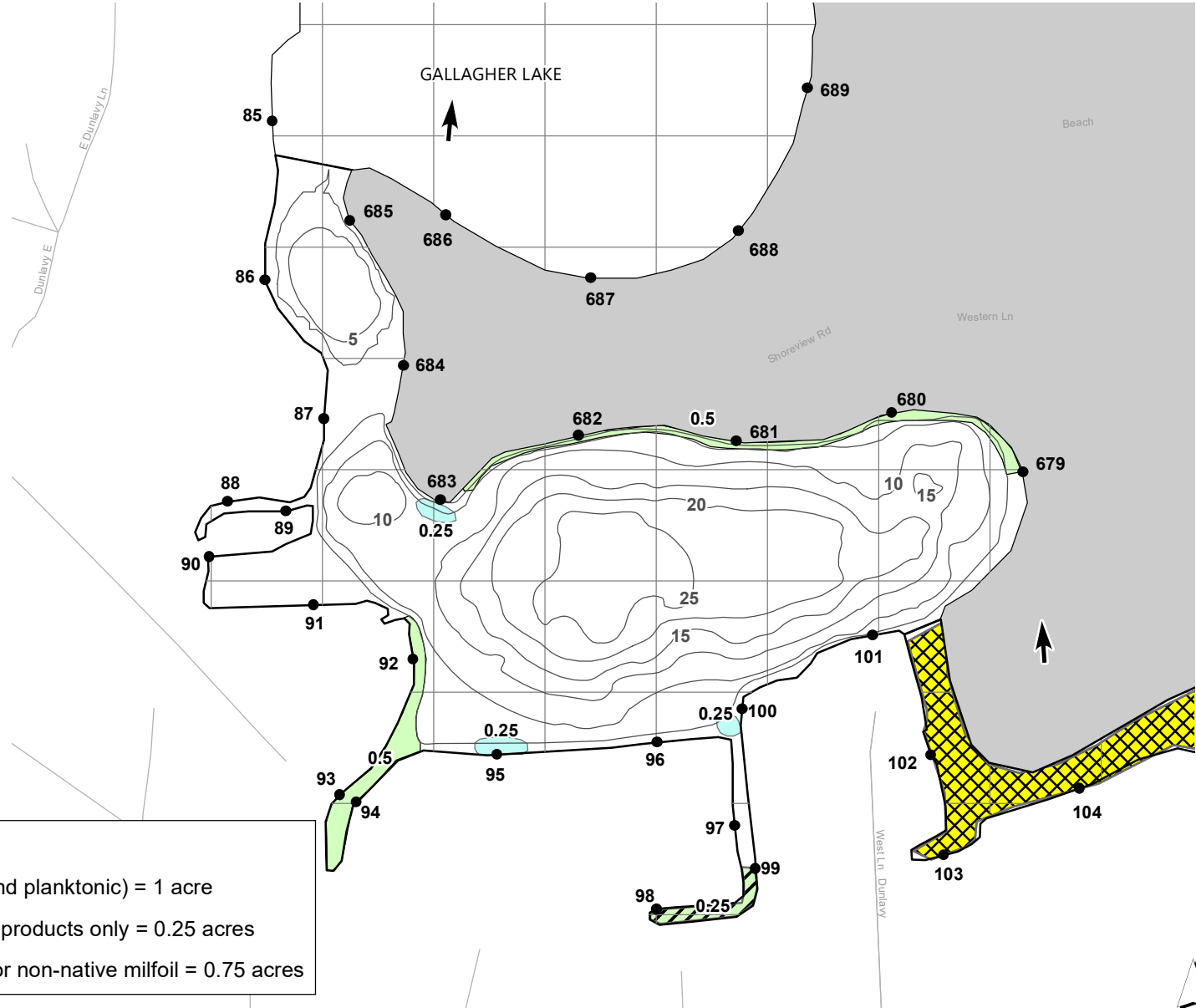
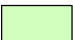




LONG (LOON) LAKE LIVINGSTON COUNTY, MICHIGAN AUGUST 2, 2022 TREATMENT MAP

 = 1 ACRE



Treatment	
	Algae control (filamentous and planktonic) = 1 acre
	Macro-algae control: copper products only = 0.25 acres
	Procellacor @ 8 PDU/acre for non-native milfoil = 0.75 acres

LAKE AREA = 17 ACRES
REVISION DATE: FEBRUARY 2022

The applicator shall make adjustments, if needed, to comply with EGLE permit requirements.

