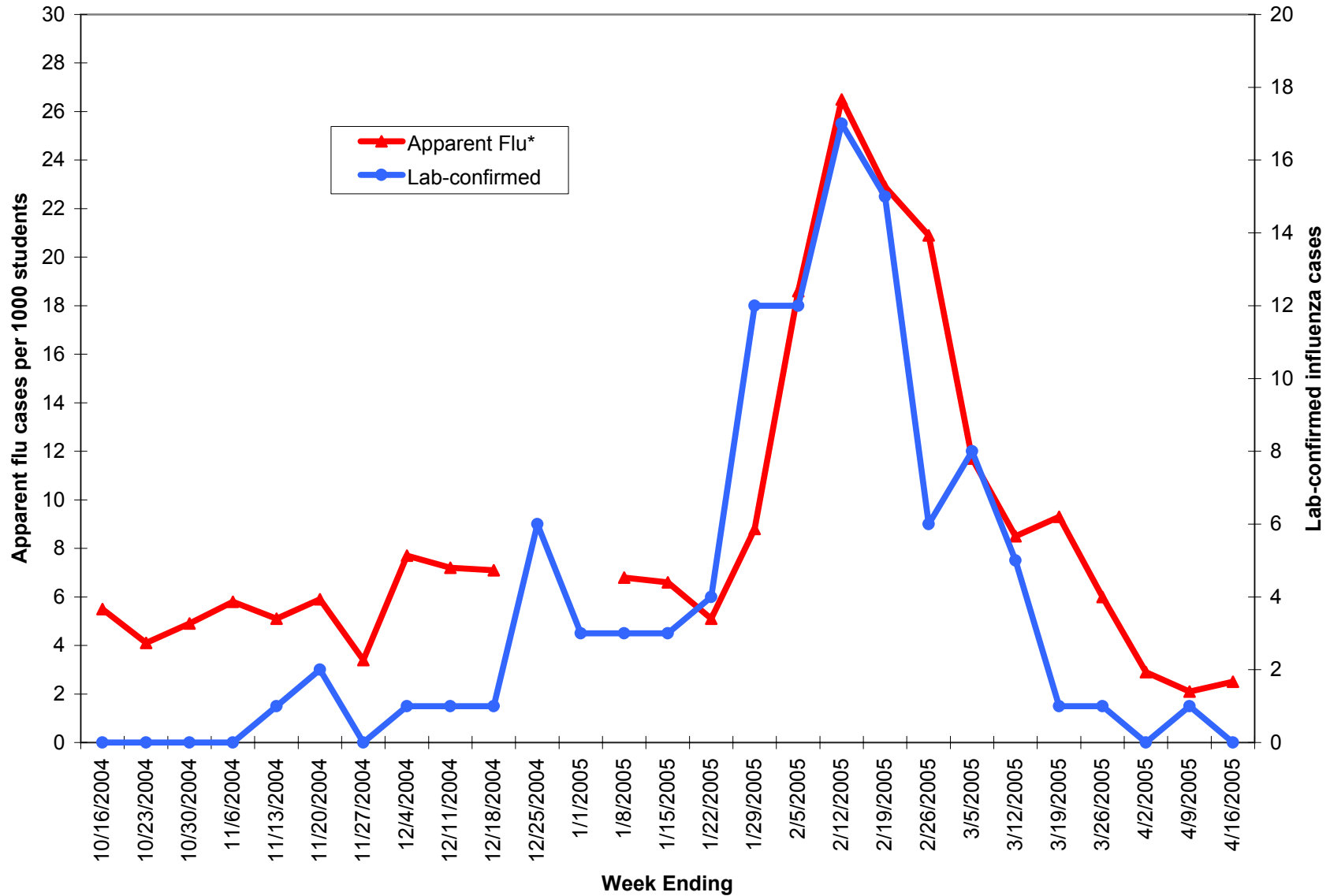


4/28/2005

Reported Apparent Flu Rates in Washtenaw Public Schools and Lab-confirmed Influenza Cases in Washtenaw Residents 2004-05 Influenza Season



*Apparent flu is defined as "Any student with fever or pneumonia AND any of the following symptoms: sore throat, cough, generalized aching in the back or limb muscles. These numbers are based on parent reports of their child's illness.